

# SXL 80 - 120

Gas storage water heater with sealed chamber for domestic and industrial use



## Technical and construction characteristics

The new SXL 80 - 120 range has been designed in compliance with the new low NOx ErP 2018 regulation.

SXL is a water heater for the production of domestic water in 80 - 120 liter accumulations depending on the model.

- Sealed forced draft combustion chamber
- Internally enameled glass tank (corrosion protection with magnesium anode)
- Electronic ignition with ionization flame detection
- Water temperature and safety regulation thermostats
- Multigas burner (methane or propane) in high efficiency stainless steel
- Wall installation
- Adjustable smoke hood for easy installation in any situation possibility of different smoke exhaust configurations (horizontal or vertical coaxial, split)

SXL 80 - 120 components

- Smoke extraction cap
- Overpressure safety valve fitted as standard
- Smoke safety pressure switch
- Flame control
- Gas valve
- Inspection and cleaning flange for calcium and magnesium anode corrosion protection
- First choice sheet metal tank (2.5 and 4 mm thick) with internal double enamelling treatment
- Instrument panel (thermometer, water regulation thermostat, water temperature safety thermostat)



ERP  
READY



LOW  
NOx EMISSIONS



WATER HEATER  
GAS



HOT WATER  
HEALTH

Model	Thermal input kW	Thermal power kW	Code	€
<b>SXL 80</b>	<b>5,00</b>	<b>4,50</b>	<b>37301011</b>	<b>2.460,00</b>
<b>SXL 120</b>	<b>5,00</b>	<b>4,30</b>	<b>37301012</b>	<b>2.810,00</b>

## Accessories SXL 80 - 120



### C12 horizontal coaxial exhaust kit

Clamp and gasket Ø 38 x 40	1 pz		
Clamp and gaske Ø 60 x 75	1 pz		
Crown fixator	3 pz		
Gasket Ø 60 x 75	1 pz		
Gasket Ø 38 x 40	1 pz		
Rose window Ø 60	2 pz	<b>37301014</b>	<b>100,00</b>
Terminal Ø 40	1 pz		
Tube Ø 38 x 1000 M / M	1 pz		
Tube Ø 60 x 930 M / M	1 pz		



### Kit scarico sdoppiato orizzontale C42

Curve Ø 38 a 90° M / M	1 pz		
Cable tie Ø 38 x 40	2 pz		
Cable tie Ø 60 x 45	1 pz		
Gasket Ø 38 x 40	2 pz		
Gasket Ø 60 x 9,5	2 pz		
Connection a T Ø 60 / 60 H = 240	1 pz	<b>37301015</b>	<b>160,00</b>
Reduction Ø 60 / 38	1 pz		
Rose window Ø 38	1 pz		
Rose window Ø 60	2 pz		
Terminal Ø 60	1 pz		
Tube Ø 38 x 1000 M / M	1 pz		
Tube Ø 60 x 1000 M / F	1 pz		

# SXL 80 - 120

Gas storage water heater with sealed chamber for domestic and industrial use

## Accessories SXL 80 - 120



### C32 vertical coaxial exhaust kit

Curve Ø 60 / Ø 38	1 pz		
Gasket Ø 38 x 40	1 pz		
Gasket Ø 60 x 45	1 pz		
Gasket Ø 38 x 40	1 pz		
Reduction Ø 100 F / Ø 80 M	1 pz		
Reduction Ø 60 / 38	1 pz		
Reduction Ø 80 F / Ø 60 M	1 pz		
Terminal Ø 60 / 100	1 pz		
Tube Ø 38 X 250 M / M	1 pz		

Codice

€

**37301016**

**300,00**



45° bend with band and gasket Ø 38

**37301020**

**20,00**



90° bend with band and gasket Ø 38

**37301021**

**20,00**



45° bend with band and gasket Ø 60

**37301022**

**28,00**



90° bend with band and Ø 90 gasket

**37301023**

**28,00**



Coaxial 45° bend with band and gasket Ø 38/60

**37301024**

**50,00**



Coaxial 90° bend with band and gasket Ø 38/60

**37301025**

**64,00**



Band with gasket Ø 38 - H 40 mm

**37301026**

**6,00**



Band with gasket Ø 60 - H 45 mm

**37301027**

**8,00**



Band with gasket Ø 60 - H 75 mm

**37301028**

**10,00**



Coaxial extension with band and gasket Ø 38/60 - L 1000 mm

**37301029**

**64,00**



Coaxial extension with band and gasket Ø 38/60 - L 500 mm

**37301030**

**54,00**



Extension with band and gasket Ø 38 - L 1000 mm

**37301129**

**36,00**



Extension with band and gasket Ø 38/60 - L 500 mm

**37301130**

**24,00**



Extension with socket Ø 60 - L 1000 mm

**37301031**

**40,00**



Extension with socket Ø 60 - L 500 mm

**37301032**

**34,00**



Reduction Ø 60 - Ø 38

**37301033**

**20,00**



Riduzione Ø 80 - Ø 60

**37301034**

**26,00**



Sheet metal rosette Ø 38

**37301035**

**6,00**



Sheet metal rosette Ø 60

**37301036**

**6,00**



Suction terminal Ø 60

**37301037**

**10,00**



Exhaust terminal Ø 38

**37301038**

**8,00**



Exhaust terminal Ø 60

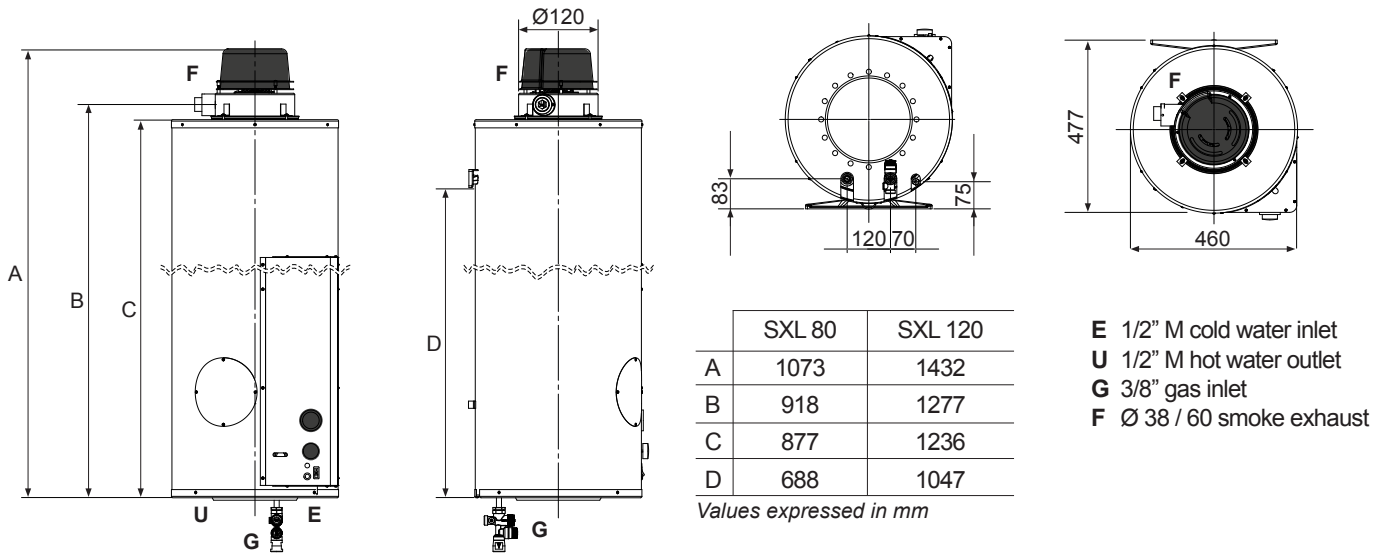
**37301039**

**10,00**

# SXL 80 - 120

Gas storage water heater with sealed chamber for domestic and industrial use

## Dimensions and dimensions SXL 80 - 120

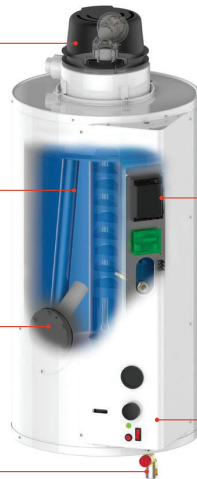


Smoke extraction cap

First choice sheet metal tank  
(thickness 2.5 mm) with internal treatment  
double enamelled

Inspection and cleaning flange for calcium  
and anode of magnesium for corrosion protection

Hydraulic safety group EN 1487



Wall installation

Flame control

Instrument panel (thermometer, thermostat  
water regulation, safety thermostat  
water temperature)

## Technical data table for SXL 80 - 120 domestic hot water generators

Description	U.M.	SXL 80	SXL 120
Thermal flow	kW	5,0	
Thermal power	kW	4,5	4,3
Yield	%	91	86
Capacity	l	75	115
Gas consumption (G20 - methane)	m <sup>3</sup> /h	0,52	
Gas consumption (G31 - propane)	kg/h	0,39	
Nitrogen oxide (NOx)	ppm	15	14
Nitrogen oxide (NOx)	mg/kWh	26	25
Sanitary efficiency class		B	
Health profile		M	L
Sound level	dB(A)	51	
Continuous sampling - ΔT = 25 °C*	l/h	157	148
Continuous sampling - ΔT = 50 °C*	l/h	78	74
Heating time - ΔT = 25 °C*	min	29	47
Heating time - ΔT = 50 °C*	min	58	93
Single sampling - ΔT = 25 °C*	l	180	276
Single sampling - ΔT = 50 °C*	l	90	138
Power supply		230V/1/50Hz	
Max water pressure	kPa (bar)	600 (6)	
Empty weight	Kg	52	57
Full weight	Kg	127	172

(\*) Storage temperature 70°C - Domestic cold water inlet temperature 10 °C