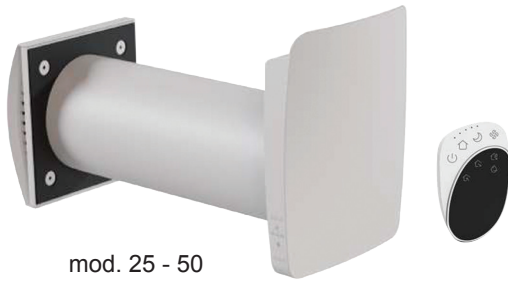


VMC PUNTUALE 25 - 50 - 65

Punctual air exchange system with integrated heat recovery



mod. 25 - 50



mod. 65



SAVINGS ENERGY



REPLACEMENT OF THE AIR



FILTRATION OF THE AIR



EFFICIENCY 97%



RECOVERY ENERGY



INSTALLATION PLUG AND PLAY

Technical and construction characteristics

VMC PUNTUALE 25 - 50 - 65 is the heat recuperator with ceramic exchanger that allows the creation of punctual mechanical ventilation systems with energy recovery. It contributes substantially to improving the energy class of buildings. The modern design of VMC PUNTUALE blends perfectly with the walls of the most sophisticated environments. The air opening, created only on the upper side, increases comfort and eliminates annoying drafts.

With a flow rate of up to 64 m³/h, VMC PUNTUALE 25 - 50 - 65 exchanges and filters the air in an optimal manner.

The result: healthier, breathable and cleaner air, but without wasting energy.

The air exchange reduces humidity with benefits of preventing or eliminating the formation of mold.

VMC PUNTUALE is equipped with an infrared remote control as standard to manage the operating mode and speed of the fan and has numerous functions: free cooling, ventilation only, ventilation with recovery, activation based on humidity.

VMC PUNTUALE 25 is ideal for controlled mechanical ventilation for rooms up to 10 m² for each device, VMC PUNTUALE 50 for rooms up to 20 m² VMC PUNTUALE 65 for rooms up to 30 m². For larger rooms, it is possible to install more devices for each room.

The VMC PUNTUALE can be installed almost anywhere because it is sufficient to make a through hole on the external wall with a diameter of 100 mm for 25 models and 160 mm for 50 and 65 models and bring the single-phase electrical power supply on board the machine.

| Model | Air flow m ³ /h | Code | € |
|------------------------|----------------------------|-----------------|---------------|
| VMC PUNTUALE 25 | 25 | 75801419 | 420,00 |
| VMC PUNTUALE 50 | 50 | 75801420 | 440,00 |
| VMC PUNTUALE 65 | 64 | 75801421 | 520,00 |

VMC PUNTUALE 25 - 50 designed for silence



MAX 26 dB

MED 16 dB

MIN 7 dB

VMC PUNTUALE 25 - 50 they are equipped with acoustic insulation to reduce external noise by 42 dB and a windproof shutter that prevents unwanted drafts from entering the house when the device is not in operation.

The fan design and acoustic insulators guarantee excellent acoustic performance at all speeds.



1 AIR OUTLET UPWARDS

No annoying drafts and aesthetics impeccable

2 TOUCH KEYS

Sophisticated design with transparent LEDs and capacitive buttons

3 CELL HEAT RECOVERY

HEXAGONAL

Very high recovery efficiency up to 97%

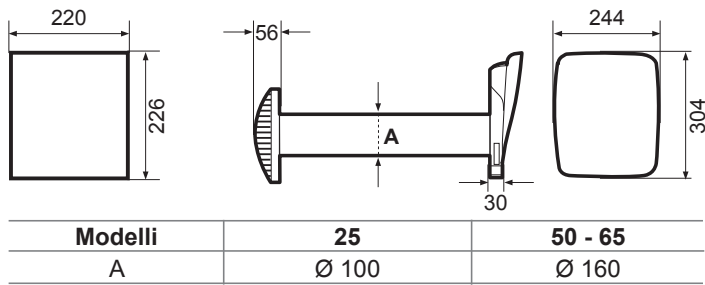
LOW NOISE FAN The

The shape of the fan blades has been designed for the specific application in order to obtain silence parameters at the highest levels.

VMC PUNTUALE 25 - 50 - 65

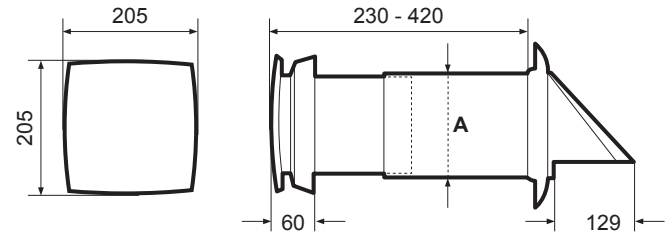
Punctual air exchange system with integrated heat recovery

Dimensions VMC PUNTUALE 25 - 50



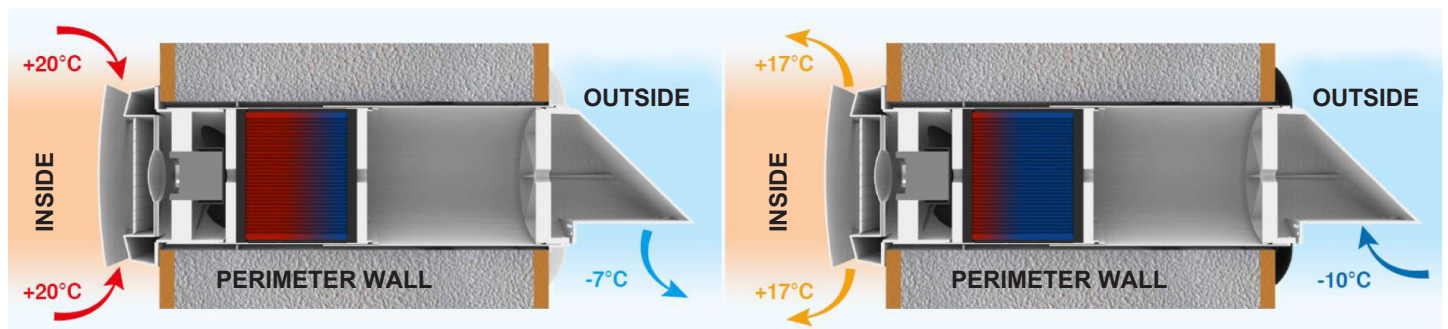
Values in mm

Dimensions VMC PUNTUALE 65



Values in mm

Operation diagram VMC PUNTUALE 65 (winter mode)



Cycle I

The hot polluted air is extracted from the environment and passing through the ceramic energy recuperator, the recuperator will absorb the heat and humidity. In 65 seconds of ventilation, the recuperator absorbs the thermal energy of the extracted air. Then the fan reverses the air flow.

Cycle II

The fresh outside air flows through the heat recuperator and absorbs the accumulated heat and humidity so that the temperature of the supply air flow comes as close as possible to the room temperature. In 65 seconds, when the recuperator cools down, the energy has been recovered and the fan switches to air extraction mode. The cycle starts again from the beginning.

Technical data table VMC PUNTUALE 25 - 50

| Model | U.M. | VMC PUNTUALE 25 | | | | VMC PUNTUALE 50 | | | |
|----------------------------|-------------------|-------------------|------|-----|----------|-----------------|------|-----|----------|
| | | Max | Med | Min | Sup. Min | Max | Med | Min | Sup. Min |
| Speed | | | | | | | | | |
| Air flow | m ³ /h | 25 | 15 | 9 | 7 | 50 | 30 | 19 | 12 |
| Renewal scope | m ³ /h | 12,5 | 7,5 | 4,5 | 3,5 | 25 | 15 | 9,5 | 6 |
| Noise at 3 metres | dB(A) | 28,5 | 18,6 | 7,8 | 4 | 26,4 | 16,4 | 7,6 | 5 |
| Energy recovery efficiency | | Fino al 97% | | | | | | | |
| Type of recuperator | | Hexagonal ceramic | | | | | | | |
| Protection class | | IPX4 | | | | | | | |
| Power supply | | 230V/1/50Hz | | | | | | | |

Technical data table VMC PUNTUALE 65

| Model | U.M. | VMC PUNTUALE 65 |
|------------------------|-------------------|-----------------|
| Frequenze | Hz | 50/60 |
| Power supply | | 230V/1/50Hz |
| Absorbed power | W | 12 |
| Current consumption | A | 0,08 |
| RPM max | | 2000 |
| Air flow | m ³ /h | 20 / 42 / 64 |
| Sound pressure | dB(A) | ≤ 36,7 |
| Recuperator efficiency | | UP TO 97% |
| Degree of protection | | IP22 |
| Channel diameter | mm | 157 |
| Weight | Kg | 6 |